

Livebearer News

Official Members Magazine of the
BRITISH LIVEBEARER ASSOCIATION



Issue 60

December

2019

CONTENTS

Page 1 : Front cover

Page 2 : Contents, Data Protection Act, Committee

Page 3 : Editorial

Pages 4 - 7 : Photos from J. Sara Fulton

Pages 8 - 9 : Musings from the fish-room by *Greg Roebuck*

Pages 10 – 12 : Visits to two BLA members' fish rooms.

Pages 13 – 17 : Report on the BLA Autumn Convention

Pages 18 – 25 : Judging guppies to IKGH standards, Part 5,
by *Steve Elliot*

Page 26 : Diary dates

Data Protection Act

In order to comply with the requirements of the Data Protection Act, we need to inform members that their name, address, email address and telephone number are being maintained on a database, the purpose of which is for the distribution of the Association's magazine and to inform members of forthcoming events. This information will not be provided to any other organisation for any purpose whatsoever without prior consultation. The association agrees to remove any details at a member's request.

Committee

Chairman : Paddy Davies email paddyd99@googlemail.com

Treasurer : Don Kenwood; 154Kenn Road, Clevedon, North Somerset, BS15 6JY; email donkenwood@blueyonder.co.uk

Editor : Greg Roebuck, email gjrsr12@gmail.com

Events organiser : Nigel Hunter; email Nigel_w98@yahoo.co.uk

Webmaster : Alan Dunne

Committee members : Clive Walker; Carl Stewart

Editorial

Something new this month!. Bill Galbally has obviously put a huge amount of work into our first “Meet The Aquarist” – featuring our own Alan Rothwell. I tried to incorporate it into the main newsletter and failed – so I will be sending it to you as a stand-alone piece, attached to the same email as this newsletter.

The October convention was really enjoyable – many thanks to Bill Galbally and Steve Oliver who did an awful lot of the donkey work. I have enclosed a full report later in the newsletter. The Goodeid Working Group convention took place at Chester Zoo in November and was another event that I really enjoyed. I hope to include a fuller report in March’s newsletter.

Many thanks again to Sara for the photos of the fish in her tanks – If anyone out there can send me their photos or articles I will include them in future newsletters. This is surely much better than me copying old articles from past “*Viviparous*” magazines. All contributions gratefully accepted! Finally – have a good Christmas and I hope we see you at the spring meeting which is in March and again at the IBM offices in Warwick. [I will email further details closer to the event.]

Reminder! Membership subs are due in the New Year. Membership is still just £6 per year, of which £1 goes to support the Fish Ark in Mexico. The easiest way to pay is by using Paypal via the BLA web-site.



Phallichthys tico by J. Sara Fulton



Phallichthys tico by J. Sara Fulton 5



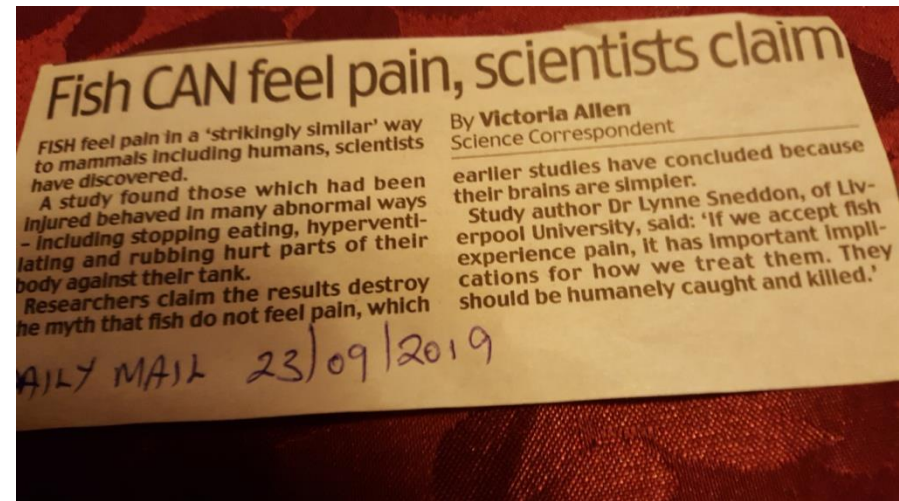
Phallichthys tico and shrimps enjoying shrimp sticks!
By J. Sara Fulton 6



Photo :- J. Sara Fulton

Following on from the article about euthanizing fish in the September newsletter, Sara Fulton sent me the article below:-

From the *Daily Mail* 23.09.2019



In my opinion, this reinforces the case for euthanizing fish as painlessly and humanely as possible.

Musings from the fish room

How many tanks have you got running? A writer in "*Tropical Fish Hobbyist*" magazine describes himself as having "far too many tanks but never enough". It is easy to have a couple of tanks in the living room. You could have maybe a dozen tanks in a spare bedroom, if the floor boards are strong enough to support the weight. [I have heard stories of people having a nasty shock when floor boards have given way and the contents of their fish-tanks have come through the down-stairs

ceilings!] More than that and you need a dedicated fish room. I look around my fish-room and realise that I made an awful lot of mistakes.

1. The fish room was never planned – it just sort of happened! It is in an extension on the side of the garage which I got divided into two to create a space with no outside door.
2. It is the wrong shape. My fish room is square, which means a large unusable area in the middle. Long and narrow gives a much bigger area that can accommodate tanks.
3. I never planned the tanks I wanted. I just acquired tanks on many different occasions over the years. I should have decided on the layout from the start and bought the tanks to fit it.
4. I never got around to building a stand for my biggest tank. It is nearly 200cm long and since I retired it has stood on three piles of bricks. If I ever get around to building a stand for it I could make it two-tier with space for half a dozen smaller tanks underneath the biggest.
5. The stands that I did build are over-engineered. In not wanting them to collapse under the weight of water, I used timber that was un-necessarily thick [and therefore more expensive].
6. The building has no plumbing or drainage. I do get tired of carrying buckets of water around but this is one that I cannot solve.

So what did I get right? Well, I took Nigel's advice and insulated the fish-room with "Kingspan". [There are many other brands.] It is said that one inch of this is equivalent to one foot of polystyrene. It is strange but when I mention this to other fish-keepers the response is almost always "That is too expensive". However, it will pay for itself in electricity saved over just a few years.

Visits to two BLA members' fish rooms

Earlier this year I visited John Benson at his new house and he showed me the fish-room that he had constructed out of the old coal-house:-





As you can see from the photos, John is quite a handyman and his fish-room benefits from being well-planned and organised. John has great success breeding many different species of livebearers. In May of this year I visited Alan Lusby in Suffolk and he showed me his fish house, which was originally the quarantine facility when he sold tropical fish :-

11



Again, the space benefits from being well-planned and organised and Alan also has great success breeding many species.

12

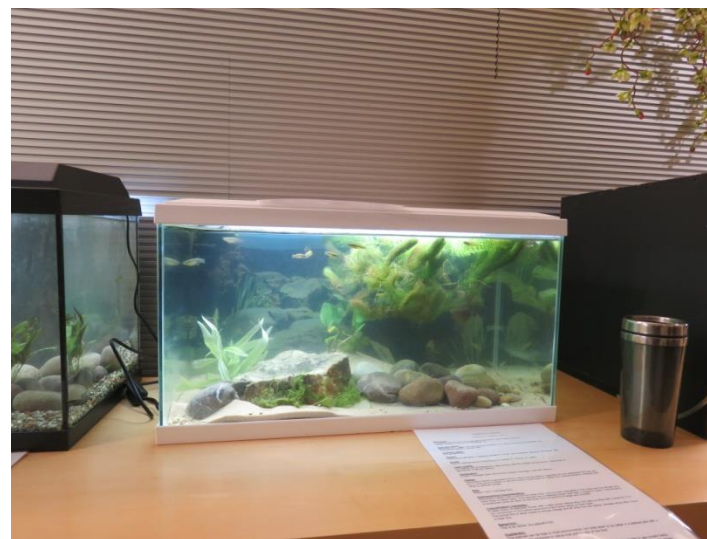
British Livebearer Association Autumn Convention 5th & 6th October 2019

A hugely enjoyable weekend! The location is excellent. The IBM offices in Warwick are nicely central and easy to get to, warm [so fish-tanks don't need to be heated], spacious and comfortable. There were biotope displays of *Goodeids* and *Gambusia marshi*, a guppy show with many stunning guppies, an Endler's show and a *Goodeid* show. These were judged on the Saturday. There was also a sales table which proved to be very popular.

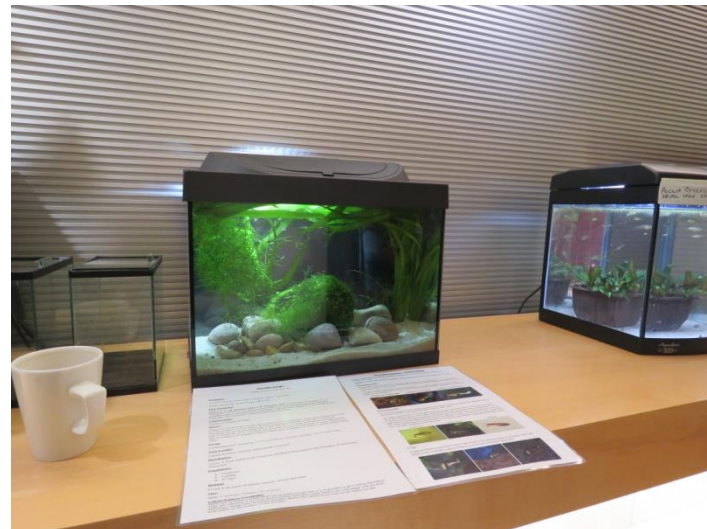


Ameba s/lendens biotope aquarium

13



Gambusia marshi biotope aquarium



Endlers biotope display

14



A twin-tail fancy guppy.



The sales table

Whilst some IT glitches were sorted out, we held our second “meet the expert” with a panel of Dave Macallister, Nigel Hunter, Bill Galbally and Paddy Davies. A lively discussion ensued with many interesting points raised. After lunch, Greg gave his talk about the Goodeid Working Group survey trip to Mexico in 2016. With Nigel and Paddy (who were also on that trip) and Dave (who has also collected extensively in Mexico) in the audience it turned into more of a discussion with slides than a talk.

This was followed by Dave talking about his experiences collecting two of his favourite fish families, *Brachyraphis* and *Xiphophorus*. Dave has made over twenty collecting trips to Central America and his fund of stories and experiences are fascinating.

The prizes for the show winners were given out on Sunday morning and the auction commenced after lunch.





Female (ALBINO)



Triangle tail – ALBINO – red



Double Sword tail – ALBINO – Metallic



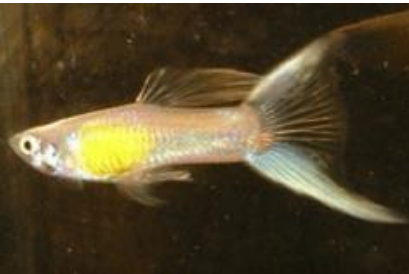
Triangle tail – ALBINO – Red

7 WHITE Yellow and red pigments are missing.

Double recessive from Blond x Blue



Female – WHITE



Double sword-tail – WHITE 19

The more observant of you would have noted that the 'white' base colour are defined as having their red and yellow pigment missing, although the picture includes a yellow guppy ! We know that there are no hard and fast rules for guppies but I still sought the advice from the well known and respected geneticist and colour 'expert' Phil Shaddock. He stated that there is no such thing as base colours. There are only colour cells. There are no Leucophores, white colour cells, and it is possible for them to be dense enough to produce a mostly white guppy. Whether or not there are yellow or red colour cells present is due entirely different genetic factors. The story is really about single colour cells and the messages they get (or don't get) when they develop. It is a very huge topic but whilst we accept and agree with the statement, it is still a very useful way to define and identify our guppies with a coding, so we will continue to do so for 'simplicity'.

8 SILVER Yellow and red pigments are missing. Scale edges have dark pigment.

Double recessive from Gold x Blue



Female SILVER



Round tail – SILVER –

9 CREAM

With or without black pigment, always black eyes.

Double recessive from blond x gold



Female CREAM

10 LATINO The pigmentation can be missing completely, dark red eyes (WREA = Wine Red Eye Albino).



Female LATINO



Head of LATINO 21

The pictures used in this presentation are my own and should be credited as so if re used. However, the better quality pictures that are all used in the base colour slides are all provided by Gernot Kaden who we graciously thank. Anyone who wishes to reproduce these pictures in any form should seek his permission and should also give full credit to him. They were taken at a time when no one else was willing or capable of producing such good quality. Gernot deserves the recognition for this work.

The **third number of the colour code** represents the top colour of the guppy. This overlays the base colour and can be a single colour or a pattern, or multicolour.

When we are judging colour the quality of pattern and the quality of colour are valued together as a single unit. We also assess the coverage of colour. The IKGH standards show examples of defects and also indicate what points we should be deducting during our assessment. This is a typical example :

44 Examples of point deduction

45 Judging of the colour / pattern of the body:

· 100 % surface covering
.....no point deductions

· 75 % surface covering
.....deduct 4 points

- 50 % surface coveringdeduct 7 points
- 25 % surface coveringdeduct 10 points
- 0 % surface coveringdeduct 12 points
- poor colour quality or pattern qualitydeduct up to 5 points

The total number of points deducted may not exceed 12.

The rules state “With recessive colours (except blond), up to 5 points can be added to the colour of the body score providing the maximum score of 12 points is not be exceeded”. This means that strong colours such as full red or Moscow blue are not advantaged over a pastel or albino colour such as albino blue.

The dorsal fin and also the tail are assessed in the same way:

47 Evaluation of the dorsal fin colour:

- 100 % surface coveringno point deduction
- 75 % surface coveringdeduct 4 points

- 50 % surface covering deduct 6 points
- 25 % surface coveringdeduct 8 points
- 0 % surface coveringdeduct 10 points
- Poor colour qualitydeduct up to 4 points

The total number of points deducted may not exceed 10.

48 Evaluation of the tail fin colour

- 100 % surface coveringno point deduction
- 75 % surface coveringdeduct 6 points
- 50 % surface covering deduct 9 points
- 25 % surface coveringdeduct 12 points
- 0 % surface coveringdeduct 14 points
- Poor colour qualitydeduct up to 6 points

The total number of points deducted may not exceed 14.

The coding numbers for the top colour are as following :

E	1.	Red	11.	Snakeskin / filigran
	2.	Blue	12.	Viennese emerald
	3.	Green	13.	One single colour (other than 1-6 Eg. Purple, orange, magenta)
	4.	Yellow	14.	Multi colour (3 or more colours)
	5.	White	15.	AC (all colours) See later
	6.	Black	16.	AOC (all other colours) See later
	7.	Neon	17.	Multicoloured (two tone colours)
	8.	Moscow	18.	Japan blue
	9.	Metallic	19.	Blue / Red grass
	10.	½ black and ¾ black		

The top colour codes seem to be straight forward but do require further explanation.

Diary dates

1. Sunday 1st December :- Charity Fish Auction organised by Tim Addis of TA Aquatics in support of the Royal British Legion Poppy Appeal.

Venue :- Quinton Royal British Legion Club
211 World's End Lane
Quinton
Birmingham
B32 2RX

[Only a short distance from Junction 3 of the M5]

Doors open at 9.00am and the first auction is at 1030 am .

The auction in June raised £250 for the poppy appeal.

Several BLA members are going and there are usually plenty of interesting fish to buy and it also gives you a chance to sell fish that you have bred at better prices than most aquatic shops will give you.

2. Spring Show and Auction –

Date :- **Saturday 14th and Sunday 15th March**

Venue :- The IBM offices in Warwick.

We are planning a lot for this event and I will send out more details in a separate email closer to the time. It should be a really great event [the last few at Warwick have been really enjoyable affairs] and it is a brilliant and easily accessible venue with lots of free parking! Hope to see you there.